

150lb

Features

1. Can be used for a range of specifications since it is a general valve based on the 20K type.
2. Support for special fluids by exchanging the packing, gasket and main parts. Please consult with us separately. – We also undertake maintenance using genuine parts.
3. The main parts are made with 13cr stainless steel and can be used up to max. 650°F (343°C).
4. The 150lb type also supports threaded ends. Please refer to the ANSI B 1.20.1 (1983) American pipe thread specifications for dimensions of joints.

Product Types

Globe, Gate, Check, Bellows seal, Ball valves

Fluid • Temperature • Pressure

Unit: MPa

Service temperature limit by fluid Top row: °C Bottom row: °F	Steady water flow	Oil, air, steam, pulsating water												LPG	City gas	
		38 (100)	38 (100)	80 (176)	149 (300)	161 (321)	170 (338)	183 (361)	204 (400)	220 (428)	230 (446)	260 (500)	343 (650)			120 (248)
Globe	Standard, needle	1.73 (250)			1.48 (215)				1.38 (200)				1.18 (170)	0.86 (125)		
	Reinforced PTFE disc	1.73 (250)			1.48 (215)		1.42 (206)									
	Bellows	1.37 (198)			1.37 (198)				1.37 (198)				1.18 (170)	0.86 (125)		
Gate		1.73 (250)			1.48 (215)				1.38 (200)				1.18 (170)	0.86 (125)		
	Standard	1.73 (250)			1.48 (215)				1.38 (200)				1.18 (170)	0.86 (125)		
Check	Reinforced PTFE disc	1.73 (250)			1.48 (215)				1.38 (200)	1.32 (192)						
	NBR disc	1.73 (250)		1.38 (200)												
	For general use	1.73 (250)	1.73 (250)			1.45 (210)	1.26 (183)	0.98 (142)				0.4 (58)				
Ball	For gas														1.18 (171)	0.98 (142)

△Caution:

- A cobalt-base alloy (Co-Cr-W alloy) for the valve seat surface is recommended in case of use in the following conditions.
 1. For steam piping with a nominal diameter of 150A (6B) or higher.
 2. For steam piping when the pressure is 0.98 MPa (10kgf/cm²) or higher, and the frequency of opening and closing is high.
 3. For use with fluids in a dry state.
 4. For piping for chemicals where corrosion resistance is required, and the main parts of the valve are 18Cr-8Ni stainless steel
- * Heat-resistant coating is recommended if the service temperature exceeds 180°C.
- * Please consult with us separately for use below 14°F (-10°C).

Test Pressure

Unit: MPa

Test description	Body pressure resistance		Valve seat leakage		Back seat leakage
	Water pressure	Air pressure	Water pressure	Air pressure	Water pressure
Globe, needle, gate (inside thread) (14B or higher), check, ball valves	3.10 (450)		2.16 (314)		
Gate, globe valve (outside thread/ 12B or lower)	3.10 (450)		2.16 (314)		2.16 (314)
Bellows seal valve		0.98 (142)		0.98 (142)	
Ball valve for gas	3.10 (450)			2.16 (314)	

150lb

Product Code

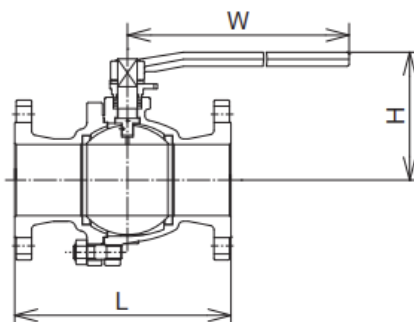
BU150F1B

Flanged

Ball valves General-purpose



Product Name	Material	Remarks
Body	SCS13A	
Ball	SCS13A	
Stem	SUS304	
Seat ring	Special PTFE	FT Seat
Packing	PTFE	
Handle	FCMB340	4B or lower
	SCS13A+SGA	5B or higher



Nominal (B)	L	W	(Reference) H
1/2	108	120	79
3/4	117	120	82
1	127	150	94
1 1/4	140	150	100
1 1/2	165	220	112
2	178	220	120
2 1/2	190	220	134
3	203	400	163
4	229	400	178
5	356	750	255
6	394	1,000	285
8	457	1,000	345

Unit: mm