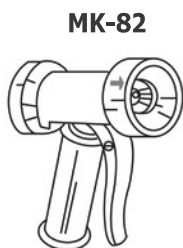
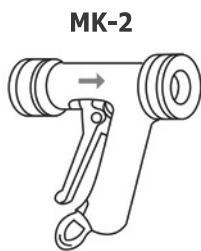


**MK**



**Features**

1. Trigger operated water gun. Front trigger or rear trigger available
2. Perfect water consumption control
3. One-handed mode with either variable spray or direct jet
4. Automatic and immediate shut-off when the trigger is released

**Suitable for**

- MK2** is suitable for most industrial applications
- MK-MV** is recommended for use with Steam-Water-Mixing Valves

Model	Material	Rubber Cover	Trigger	Orifize Size		Max. Pressure	
				in	mm	MPa	psi
<b>MK-2</b>	Gunmetal or Stainless Steel	Black or White	rear	5/16"	7,9	2,8	406.0
<b>MK-OH</b>				7/16"	11,1		
<b>MK-MV</b>				9/16"	14,3		
<b>MK-78</b>	Gunmetal	Black or White	front	5/16"	7,9	1,4	203.0
<b>MK-80</b>				7/16"	11,1		
<b>MK-82</b>				9/16"	14,3		

Pressure		Orifize Size			Orifize Size		
MPa	psig	5/16"	7/16"	9/16"	5/16"	7/16"	9/16"
		l/min			GPM		
0,035	5.0	3,2	13,5	15,0	0.84	3.56	3.96
0,07	10.2	5,6	20,0	21,0	1.48	5.28	5.54
0,1	14.5	7,0	22,5	24,0	1.85	5.94	6.34
0,2	29.0	10,0	25,0	36,0	2.64	6.60	9.50
0,3	43.5	12,5	32,0	47,0	3.30	8.45	12.41
0,35	50.8	14,5	37,0	52,0	3.83	9.77	13.73
0,4	58.0	16,0	38,0	55,0	4.22	10.03	14.52
0,5	72.5	18,0	40,0	60,0	4.75	10.56	15.84
0,6	87.0	20,5	42,0	65,0	5.41	11.09	17.16
0,7	101.5	22,3	44,0	69,0	5.89	11.62	18.22
1,0	145.0	27,5	51,0	—	7.26	13.46	—
1,5	217.5	35,0	62,0	—	9.24	16.37	—
2,0	290.0	43,0	74,0	—	11.35	19.54	—
2,5	362.5	50,5	85,0	—	13.33	22.44	—

**CVC3, CVC3R, CV5R Check Valve**

**CVC3, CVC3R, CV5R**

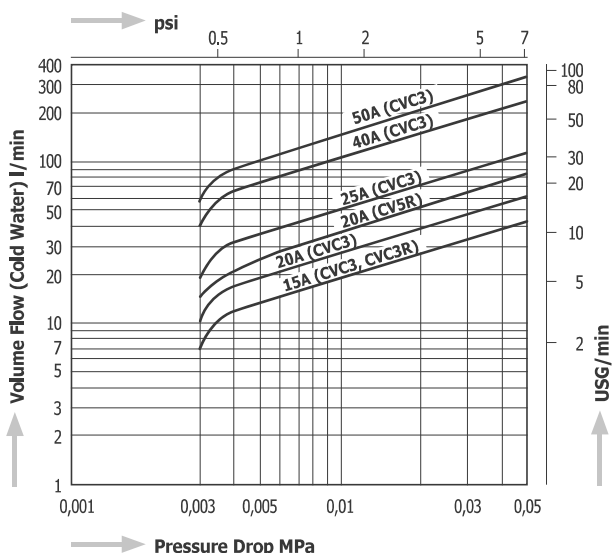


**CVC3, CVC3R**



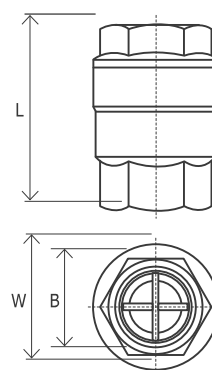
**CV5R**

**Pressure Drop Chart**

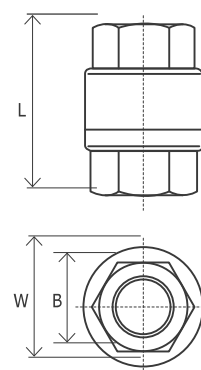


**Dimensions**

**CVC3, CVC3R**



**CV5R**



Model	Connections	Size	Max. Operating Pressure		Opening Pressure		Max. Operating Temperature		Dimensions (mm)			Dimensions (in)			Body Material	Weight	
			MPa	psig	MPa	psig	°C	°F	L	W	B	L	W	B		kg	lb
<b>CVC3</b>	Screwed Rc, NPT	1/2"	2,1	305	0,003	0.44	220	428	48	35	27	1,9	1.4	1.1	Stainless Steel SCS13A	0,2	0.44
		3/4"							61	43	33	2.4	1.7	1.3		0,3	0.66
		1"							73	54	41	2.9	2.1	1.6		0,6	1.32
		1 1/2"							87	75	58	3.4	3.0	2.3		1,2	2.64
		2"							100	90	72	3.9	3.5	2.8		1,8	3.96
<b>CVC3R</b>	Screwed Rc, NPT	1/2"	2,1	305	0,003	0.44	80	176	48	35	27	1.9	1.4	1.1	SCS13A	0,2	0.44
<b>CV5R</b>	Screwed Rc, NPT	3/4"	1,6	230	0,003	0.44	80	176	60	46	34	2.4	1.8	1.3	SCS13A	0,3	0.66