

# SCV-3



The SCV-3 is a shape of body check valve to prevent fluid backflow. It is used widely for steam or water (hot water) piping, etc. and effective in preventing water hammer.

## ■Features

1. Can be installed between a lot of major flange types and connection standards without measuring device due to the shape of body.
2. Can be connected in any direction (horizontal or vertical).

## ■Specifications

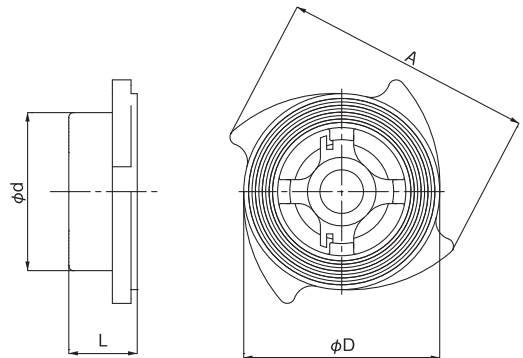
Application	Steam, Cold and hot water	
Maximum pressure	2.0 MPa	
Maximum temperature	220°C	
Minimum opening pressure	0.003 MPa	
Material	Body	Cast stainless steel
	Disc	Cast stainless steel
Connection	Wafer *	

\* A small amount of fluid leaks at the valve seat. So, it should not be used for applications requiring complete closing.

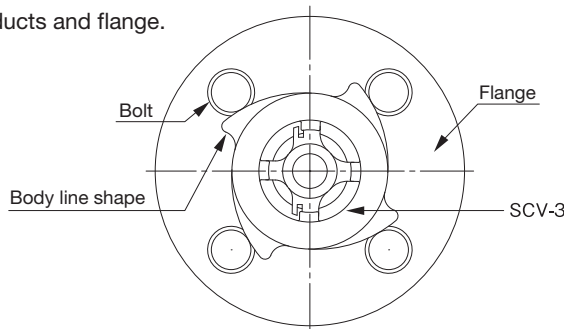
\* See another table regarding applicable connection standard.

## ■Dimensions (mm) and Weights (kg)

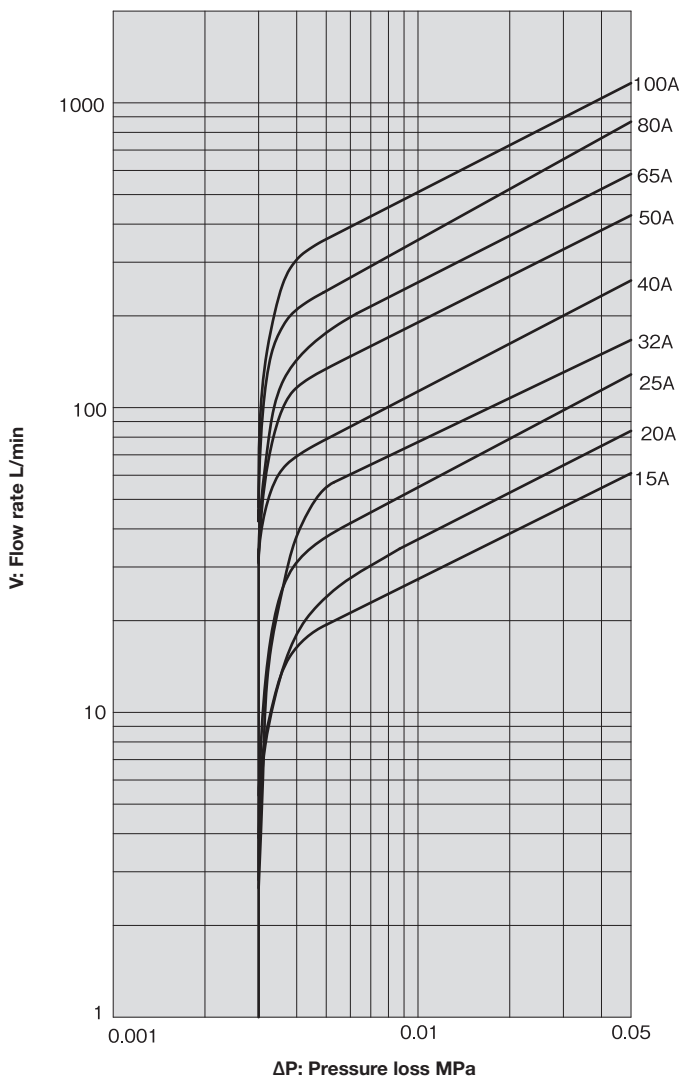
Nominal size	$\phi d$	L	$\phi D$	A	Weight
15A	35.0	16.0	43.0	63.0	0.20
20A	45.0	19.5	53.0	69.5	0.30
25A	51.0	22.0	63.0	80.5	0.40
32A	60.5	28.0	72.5	90.5	0.70
40A	70.0	31.5	82.0	101.0	0.90
50A	90.0	40.0	95.5	115.0	1.50
65A	102.0	45.0	116.0	142.0	2.20
80A	121.0	50.0	129.5	153.5	2.90
100A	145.0	60.0	154.5	180.0	4.50



Concerning with piping, please connect the part of body line shape to the bolt as shown in the figure and please together in the center of products and flange.



■ Pressure Loss Chart (For water)



■ Overview of Applicable Connection Standard

Nominal size	JIS				ASME				PN (EN/DIN/GB)				
	5K	10K	16K	20K	125lb	150lb	250lb	300lb	6	10	16	25	40
15A	○	○	○	○	×	○	×	○	○	○	○	○	○
20A	○	○	○	○	×	○	×	○	○	○	○	○	○
25A	○	○	○	○	○	○	○	○	○	○	○	○	○
32A	○	○	○	○	○	○	○	○	○	○	○	○	○
40A	×	○	○	○	○	○	○	○	○	○	○	○	○
50A	×	○	○	○	○	○	○	○	○	○	○	○	○
65A	○	○	○	○	○	○	○	○	○	○	○	○	○
80A	×	○	○	○	○	○	○	○	○	○	○	○	○
100A	×	○	○	○	○	○	○	○	×	○	○	○	○

\* Mark (○) on the above table are possible piping. Mark (×) are not possible piping.